



# Flight Plan & Site Survey

Created using **RPAS Wilco®**

Reference No:	956E37
Title:	Amidair - over 400
Pilot Name:	
Pilot Certificate:	
Flight Start:	October 30, 2024 9:19 PM
Flight End:	October 30, 2024 11:19 PM
Flight Area (Latitude):	45° 45' 12.00" N ( 45.753 )
Flight Area (Longitude):	73° 45' 14.00" W ( -73.754 )
Altitude - Radius:	<b>Alt:</b> 600 ft - <b>Rad:</b> 1852.0 m ( 1.0 nm)
Classification:	RESTRICTED
FIR - Contact:	CZUL - 506-867-7173

## Notes:

Your flight is in restricted airspace.  
Please obtain approval from controlling agency found in the DAH.

Please ensure you received all required authorizations prior to flight.

## Disclaimer

This Site Survey was created using RPAS Wilco by AIM Robotics. The flight plan contained is intended only for RPAS flights on the date/time and location specified. The user accepts all responsibility for the accuracy and completeness of the information contained.

For the complete Terms & Conditions, see

<https://rpaswilco.com/#/tnc>

## Included

- Site Survey
- Obstacles (if available)
- Nearby Aerodromes
- Canadian Aviation Regulations
- GFA
- Aerodrome Supplements
  - METAR & TAF (if available)
  - NOTAMS
  - CFS





## Flight Map



## RPAS Specification

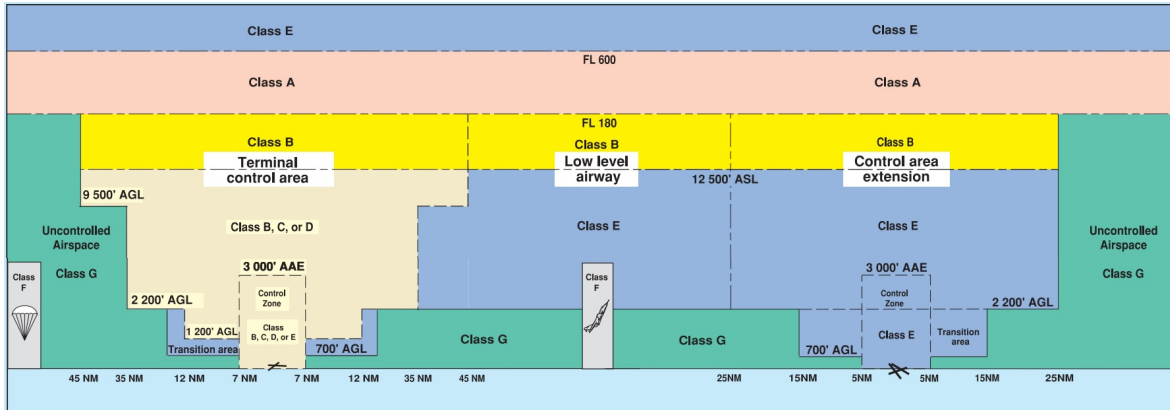
- **Manufacturer:**  
MAAC
- **Model:**
- **Registration Number:**
- **Eligible for advanced operations:**  
Yes
- **Manufacturer RPAS safety assurance:**
  - Controlled Airspace: YES
  - Near People: NO
  - Over People: NO

## MAP Details

		Latitude	Longitude
	<b>MODEL</b>	45° 45' 12.00" N ( 45.753 )	73° 45' 14.00" W ( -73.754 )
	<b>Pilot</b>	45° 45' 15.60" N ( 45.7543 )	73° 45' 17.60" W ( -73.7549 )



## Airspace Classification



## Overlying Airspaces

Class	Name	Floor	Ceiling
E	Montreal FIR CAE	2000MSL	12500MSL
B	Montreal FIR CAE	12500MSL	18000MSL
C	Montréal, QC TCA XPND R MANDTRY	3000MSL	5000MSL
C	Montréal, QC TCA XPND R MANDTRY	2000MSL	3000MSL
C	Montréal, QC TCA XPND R MANDTRY	5000MSL	12500MSL
E	T693 Airway	2200AGL	12500MSL
B	T693 Airway	12500MSL	18000MSL
E	T705 Airway	2200AGL	12500MSL
B	T705 Airway	12500MSL	18000MSL
E	T781 Airway	2200AGL	12500MSL
B	T781 Airway	12500MSL	18000MSL
E	Montréal Intl , QC TA XPND R MANDTRY	1300MSL	1500MSL
C	Montréal, QC TCA XPND R MANDTRY	1500MSL	2000MSL
R	CYR631 STE-TH R SE, QC	SFC	1500MSL
E	T616 Airway	2200AGL	12500MSL
B	T616 Airway	12500MSL	18000MSL
E	T662 Airway	2200AGL	12500MSL
B	T662 Airway	12500MSL	18000MSL
E	Montreal FIR CAE	6000MSL	12500MSL
B	Montreal FIR CAE	12500MSL	18000MSL

## Nearest Aerodromes & Distance from Operation

LAC AGILE (MASCOCHE) (CSA2 - AERODROME - Reg)	Lat: 45.791	Long: -73.638	9.916KM	5.35NM	NE
PASSPORT HELICO (CPP8 - HELIPORT - Reg)	Lat: 45.723	Long: -73.595	12.784KM	6.9NM	E
BOISVERT AND FILS (CSA4 - WATERDROME - )	Lat: 45.646	Long: -73.597	17.056KM	9.21NM	SE
ST-ESPRIT (CES2 - AERODROME - Reg)	Lat: 45.911	Long: -73.672	18.644KM	10.07NM	N
MONTREAL (BELL) (CSW5 - HELIPORT - Reg)	Lat: 45.685	Long: -73.931	15.71KM	8.48NM	SW



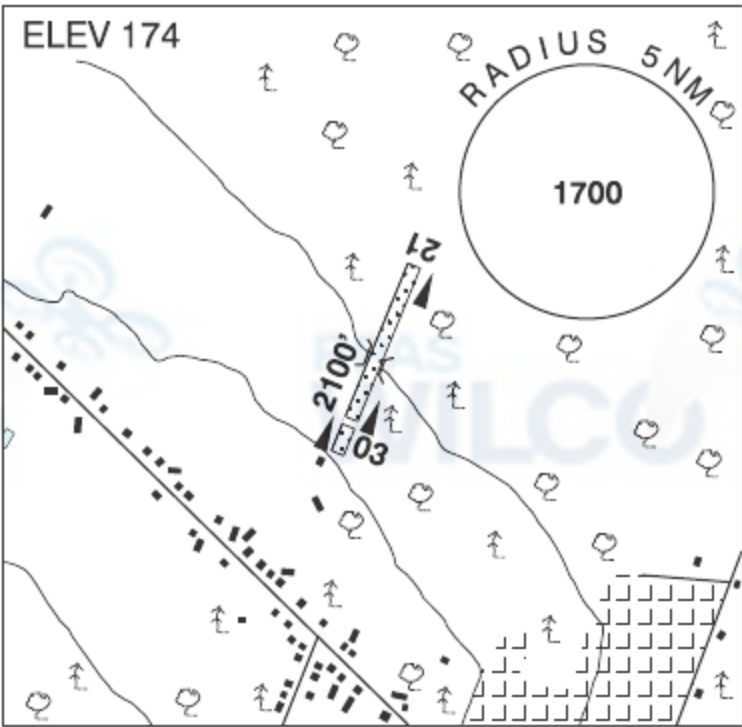
QUEBEC

AERODROME/FACILITY DIRECTORY

LAC AGILE (MASCOUCHE) QC

CSA2

REF	N45 47 28 W73 38 17   3.5NNW 15°W (2015)   UTC-5(4)   Elev 174' A5002   VTA
OPR	Gestion Wilburdea Inc 514-249-4040 or 450-675-0350   Reg   PPR
PF	B-1   C-2,3,4,5,6
FLT PLN FIC	(bil) Québec 866-GOMÉTÉO or 866-WXBRIEF (Toll free within Canada) or 866-541-4105 (Toll free within Canada & USA)
SERVICES S	1,4
RWY DATA RCR	Rwy 03/21   2100x50 GRASS   Thld 03 displ 300' Opr   No win maint
COMM ATF	tfc 123.2   2NM 2000 ASL
PRO	Rgt hand circuits Rwy 21 (CAR 602.96). Touch and go not auth.
CAUTION	Bridge crossing ditch 1000' from displ thld Rwy 21. Possibility of wildlife on the rwy.

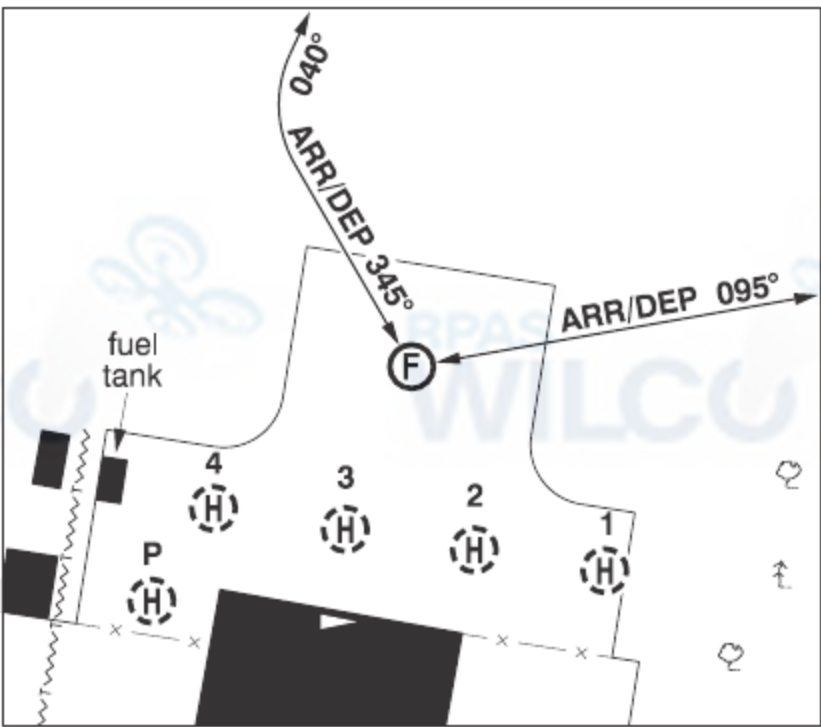
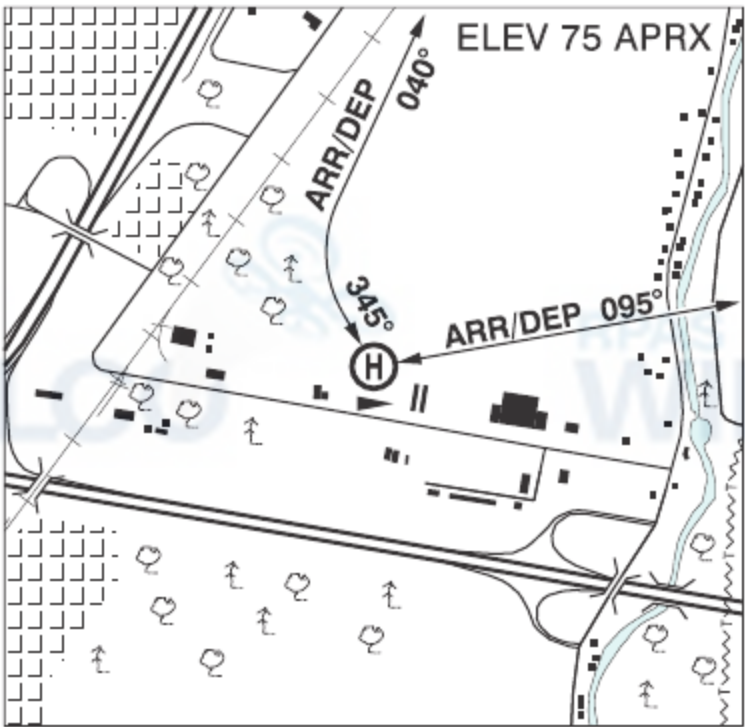


QUEBEC

AERODROME/FACILITY DIRECTORY

MONTRÉAL / PASSPORT HÉLICO QC (Heli)

CPP8



REF	N45 43 21 W73 35 43 1SE 15°W (2016) UTC-5(4) Elev 75' aprx VTA A5002
OPR	Passport Hélico 450-474-4888 Fax 450-474-6323 Reg PPR
PF	A-1,3,6,7,8 C-2,5
FLT PLN	(bil)
FIC	Québec 866-GOMÉTÉO or 866-WXBRIEF (Toll free within Canada) or 866-541-4105 (Toll free within Canada & USA)
ACC	Montréal 514-633-3211 or 800-633-1353, all Flt Plns, IFR tng PPR. Flt Plns by Fax at 514-633-2877 & include phone numbers where pilot can be reached prior to dep. IFR clearance or activation 514-633-3014.
SERVICES	Call out chg may be levied for one or more svcs
FUEL	100LL, JA-1
OIL	15W50, Mobil 254
S	1,2,3,4,6
HELI DATA	FATO 64' x 64' GRVL Safety Area 85' x 85' Max heli overall length 43' Parking Pad 1, 2 & 3: 38' dia ASPH Parking Pad 4: 40' dia ASPH Parking Pad P: 20' x 20' ASPH
RCR	Opr
LIGHTING	RF(FH)
COMM	
MF	tfc 122.35 (without ground station) 3NM excluding the portion S of the N shore of Rivière des Milles-Îles & 2NM around Lac Agile (Mascouche) A/D 2000 ASL (CAR 602.98)
PRO	Arr/dep 095° fr heli, day use only. Arr/dep curved 345°to 040° fr heli, day use only.
CAUTION	Parking positions dimensions are less than the overall length of most types of heli.

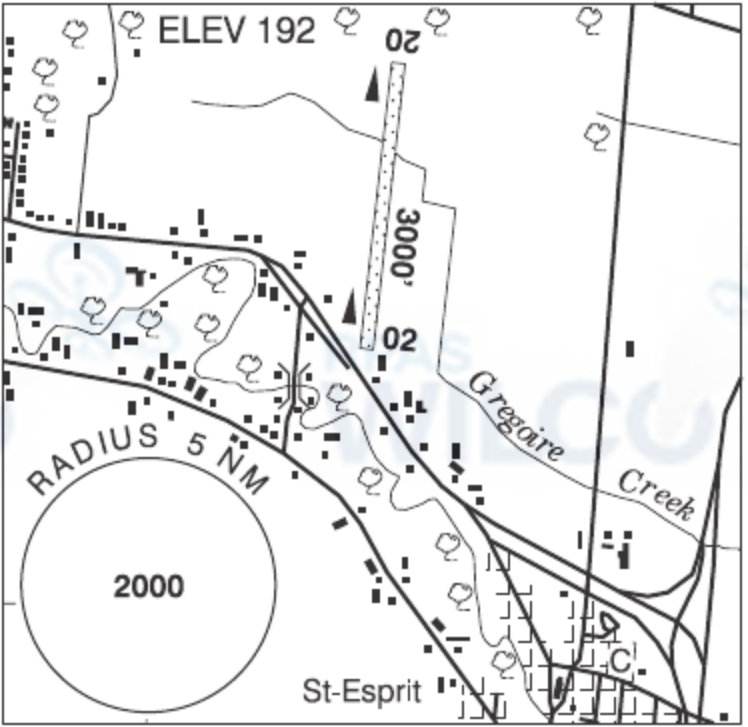


QUEBEC

AERODROME/FACILITY DIRECTORY

ST-ESPRIT QC

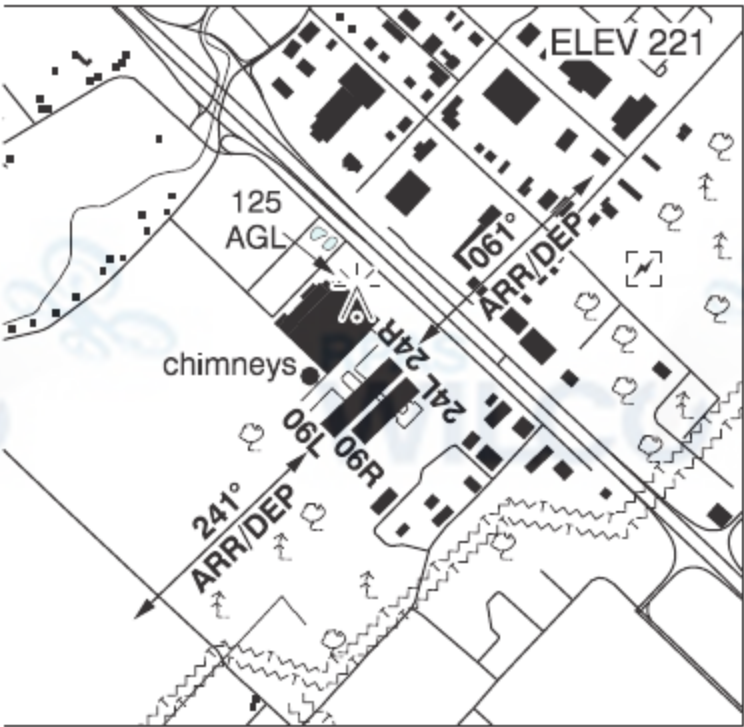
CES2

REF	N45 54 41 W73 40 21 Adj NNW 14°W (2024) UTC-5(4) Elev 192' VTA A5002	
OPR	Aérodrome Saint-Esprit Inc. 450-839-1111 Fax 450-839-6969 Reg PPR	
PF	C-1	
FLT PLN FIC	(bil) Québec 866-GOMÉTÉO or 866-WXBRIEF (Toll free within Canada) or 866-541-4105 (Toll free within Canada & USA)	
RWY DATA RCR	Rwy 02/20 3000x75 GRASS Opr No win maint Nov-Mar	
COMM ATF A/G	tfc 123.2 5NM BLW 2500 ASL 129.85	
CAUTION	Parachuting activity Mar-Nov to 17,000'. P-line and barn 30 AGL 300' S of Thld 02. Antenna 500 ASL 1.4NM SSE A/D.	

QUEBEC

AERODROME/FACILITY DIRECTORY

**MONTRÉAL (BELL) QC (Heli)** **CSW5**

REF	N45 41 06 W73 55 52 15°W (2013) UTC-5(4) Elev 221' VTA A5002	
OPR	Bell Helicopter Textron 450-437-8039 Reg PPR	
PF	A-1 C-2,3,4	
FLT PLN	(bil)	
FIC	Québec 866-GOMÉTÉO or 866-WXBRIEF (Toll free within Canada) or 866-541-4105 (Toll free within Canada & USA)	
ACC	514-633-3211	
SERVICES		
ARFF	CAT 3	
HELI DATA	FATO/TLOF 06L(061°)/24R(241°) 1000' x 100' ASPH Day use only FATO/TLOF 06R(061°)/24L(241°) 800' x 100' ASPH Day use only FATO/TLOF 92' x 92' ASPH Safety area 100' x 100' Day use only Max heli overall length 61'	
LIGHTING	FH (apron)	
COMM	(bil)	
RADIO	Mirabel 119.1 (E) 03-11Z‡	
TWR	Mirabel 119.1 (E) 11-03Z‡	
A/G	Tour de Bell 130.25 382.6 1200-2230Z‡	
PRO	White X markings affixed to lengthened FATOs are used as target point for autorotation maneuvers. Clnr rqr'd to penetrate in CYR601, CYR624 and CYR631. See Montreal Intl (Mirabel) VTPC.	
CAUTION	Double set high voltage P-lines aprx 1550' S and SE of heli aprx 410 ASL (190 AGL). Southern P-line marked. Two lgtd roof-top antennas on main bldg aprx 346 ASL (125 AGL).	

# Canadian Aviation Regulations

## Division III — General Operating and Flight Rules

For full listing please visit : <https://laws-lois.justice.gc.ca/eng/regulations/SOR-96-433/FullText.html#s-901.27>

### Visual Line-of-sight

- **901.11 (1)** Subject to subsection (2), no pilot shall operate a remotely piloted aircraft system unless the pilot or a visual observer has the aircraft in visual line-of-sight at all times during flight.
- **(2)** A pilot may operate a remotely piloted aircraft system without the pilot or a visual observer having the aircraft in visual line-of-sight if the operation is conducted in accordance with a special flight operations certificate — RPAS issued under section 903.03.

### Procedures

- **901.23 (1)** No pilot shall operate a remotely piloted aircraft system unless the following procedures are established:
  - **(a)** normal operating procedures, including pre-flight, take-off, launch, approach, landing and recovery procedures; and
  - **(b)** emergency procedures, including with respect to
    - **(i)** a control station failure,
    - **(ii)** an equipment failure,
    - **(iii)** a failure of the remotely piloted aircraft,
    - **(iv)** a loss of the command and control link,
    - **(v)** a fly-away, and
    - **(vi)** flight termination.
- **(2)** If the manufacturer of the remotely piloted aircraft system provides instructions with respect to the topics referred to in paragraphs (1)(a) and (b), the procedures established under subsection (1) shall reflect those instructions.
- **(3)** No pilot shall conduct the take-off or launch of a remotely piloted aircraft unless the procedures referred to in subsection (1) are reviewed before the flight by, and are immediately available to, each crew member.
- **(4)** No pilot shall operate a remotely piloted aircraft system unless the operation is conducted in accordance with the procedures referred to in subsection (1).

### Site Survey

**901.27** No pilot shall operate a remotely piloted aircraft system unless, before commencing operations, they determine that the site for take-off, launch, landing or recovery is suitable for the proposed operation by conducting a site survey that takes into account the following factors:

- **(a)** the boundaries of the area of operation;
- **(b)** the type of airspace and the applicable regulatory requirements;
- **(c)** the altitudes and routes to be used on the approach to and departure from the area of operation;
- **(d)** the proximity of manned aircraft operations;
- **(e)** the proximity of aerodromes, airports and heliports;
- **(f)** the location and height of obstacles, including wires, masts, buildings, cell phone towers and wind turbines;
- **(g)** the predominant weather and environmental conditions for the area of operation; and
- **(h)** the horizontal distances from persons not involved in the operation.

### Operations at or in the Vicinity of an Aerodrome, Airport or Heliport

- **901.47 (1)** No pilot shall operate a remotely piloted aircraft at or near an aerodrome that is listed in the *Canada Flight Supplement* or the *Water Aerodrome Supplement* in a manner that could interfere with an aircraft operating in the established traffic pattern.
- **(2)** Subject to section 901.73, no pilot shall operate a remotely piloted aircraft at a distance of less than
  - **(a)** three nautical miles from the centre of an airport; and
  - **(b)** one nautical mile from the centre of a heliport.
- **(3)** No pilot shall operate a remotely piloted aircraft at a distance of less than three nautical miles from the centre of an aerodrome operated under the authority of the Minister of National Defence unless the operation is conducted in accordance with a special flight operations certificate — RPAS issued under section 903.03.

### Records

- **901.48 (1)** Every owner of a remotely piloted aircraft system shall keep the following records:
  - **(a)** a record containing the names of the pilots and other crew members who are involved in each flight and, in respect of the system, the time of each flight or series of flights; and
  - **(b)** a record containing the particulars of any mandatory action and any other maintenance action, modification or repair performed on the system, including
    - **(i)** the names of the persons who performed them,
    - **(ii)** the dates they were undertaken,
    - **(iii)** in the case of a modification, the manufacturer, model and a description of the part or equipment installed to modify the system, and
    - **(iv)** if applicable, any instructions provided to complete the work.
- **(2)** Every owner of a remotely piloted aircraft system shall ensure that the records referred to in subsection (1) are made available to the Minister on request and are retained for a period of
  - **(a)** in the case of the records referred to in paragraph (1)(a), 12 months after the day on which they are created; and
  - **(b)** in the case of the records referred to in paragraph (1)(b), 24 months after the day on which they are created.
- **(3)** Every owner of a remotely piloted aircraft system who transfers ownership of the system to another person shall, at the time of transfer, also deliver to that person all of the records referred to in paragraph (1)(b).